

INSTRUCTION AND MAINTENANCE MANUAL



CORCHO PROYECTADO
DECOPROYEC®
DECORBOYEC
PROJECTED CORK



CP19

DECOPROYEC

C/Trilladores nº47 - Nave 4 y 5 (P.I. Los Molinos)

C.P.: 02520 - Chinchilla de Montearagón

(ALBACETE) - Spain

1. INFORMATIVE NOTE

This document has to be at disposal of the staff involved in the equipment use and maintenance. If you have any questions or problems, please contact us.

In order to ensure that the equipment characteristics correspond to those specified in your order, please, check it when you receive it and contact us in case any disagreement is detected.

 **ATTENTION:**

In order to ensure that the equipment characteristics correspond to those specified in your order, please, check it when you receive it and contact us in case any disagreement is detected.

2. WASTE AND ENVIRONMENT



REMEMBER:

To get rid of polluting and dangerous products, packaging, disused equipment and tools and any type of waste produced by its activity in general, please use the suitable waste sorting and treatment point for each case.

3. CHARACTERISTICS

TECHNICAL DATA	CP19
Nozzles	6 mm (5 & 8 mm as an option)
Body	Anodized external treatment
Air consumption	110 l./m. at 2.5 bar 125 l./m. at 3 bar
Funnel capacity:	5 Litros nylon
Weight	605 gr.
Air inlet	CR ¼
Supply system	Gravity
Functioning	Valve / continuous air



4. APPLICATIONS

Applications with projected cork, stippled-finish paints or “gotele”, textile coatings on medium-sized surfaces.

5. OPERATING MODES

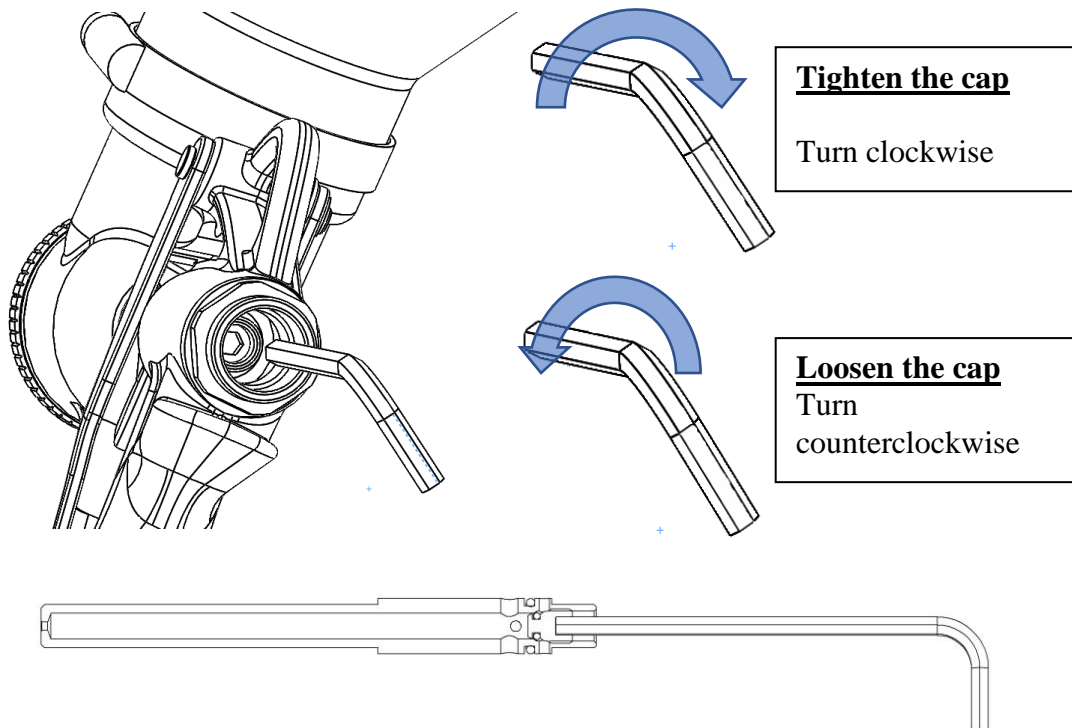
The gun can work in two different modes:

a) Valve mode

In this mode, the air outlet through the needle only happens whenever the trigger is pulled. It is the **default configuration**, and the gun leaves the factory with it.

To change from the Continuous Air Mode to the Valve Mode, follow these steps:

- 1) Disassemble the product regulator (no.12 of the exploded view) and take the spring out (no.13 of the exploded view).
- 2) Insert an Allen key size 4 at the back of the needle, whose cap has an Allen groove (no.10 of the exploded view).



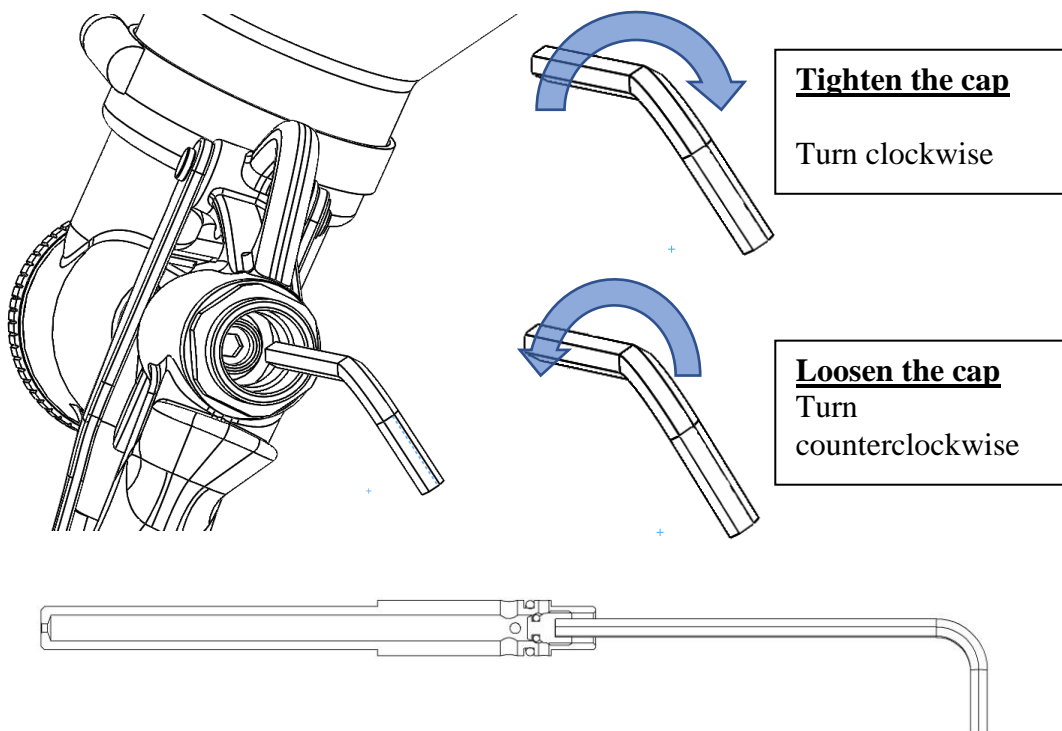
- 3) Turn the Allen key clockwise to **tighten** the cap.

b) Continuous air mode

The air outlet through the needle is continuous in this mode regardless of when the trigger is pulled.

To change from the Valve Mode to the Continuous Air Mode, follow these steps:

- 1) Disassemble the product regulator (no.12 of the exploded view) and take the spring out (no.13 of the exploded view)
- 2) Insert an Allen key size 4 at the back of the needle, whose cap has an Allen groove (no.10 of the exploded view).



- 3) Turn the Allen key *counterclockwise* to **unlock** the cap. Be careful when removing the cap enough to open the continuous air holes but **it can NEVER protrude the needle.**

6. WORKING INSTRUCTIONS

The size of the drop can be adjusted with the product regulator (no.12 of the exploded view); turning clockwise you get bigger drops and counterclockwise smaller drops.

It is also important to know that the higher the product viscosity, the bigger the sprayed drops will be.



7. CLEANING PROCEDURE AND MAINTENANCE

First, empty the product tank. Fill it with water or the appropriate solvent, spray until it is completely clean and dry the gun.

Finally, grease properly all the points where wear occurs more often such as the needle, threads, trigger, and so on.

8. SAFETY DATA SHEET

**ATTENTION:**

A misuse of the equipment can cause accidents, defects or malfunctioning. Please, read carefully the following instructions.

Take in mind the following rules:

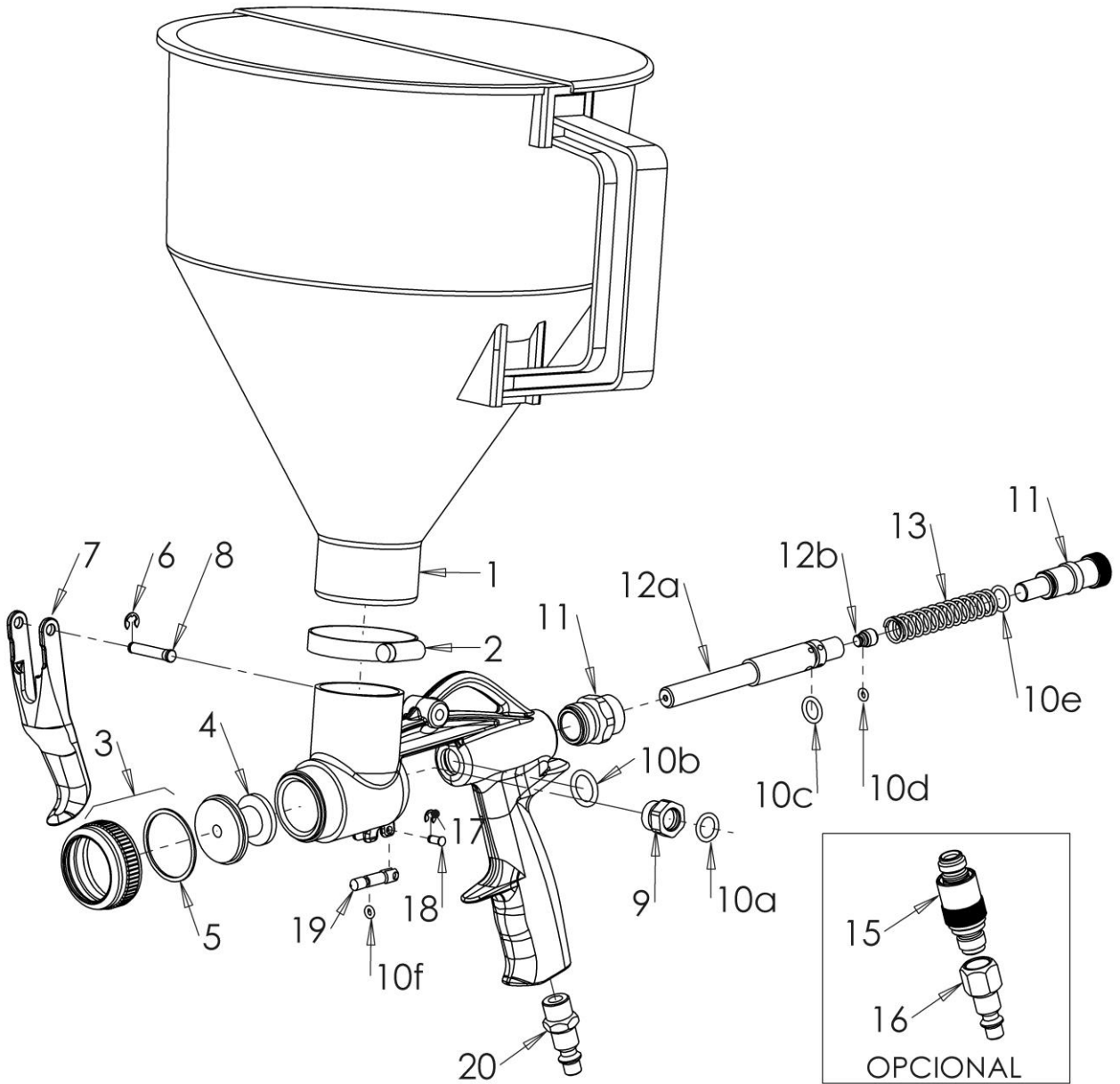
- ✓ Do not use the spray gun in those operations for which it has not been designed.
- ✓ Read all the warnings on the products you use.
- ✓ Use approved masks.
- ✓ Do not aim gun at people or animals.
- ✓ Disconnect it from the compressed air network before any repair.
- ✓ Use the gun in a well-ventilated area where there are no risks of explosion or fire.
- ✓ Never exceed pressure of 8 bar.
- ✓ Once the work is finished, close the product regulator completely (no.12 of the exploded view) to prevent vaporization.

9. WARRANTY CERTIFICATE

1. It extends only and exclusively against any manufacturing defect.
2. The period of validity is 2 years from the date of purchase.
3. Warranty covers the repair in our facilities or our technical services.
4. The machine, whose fault is due to bumps, falls or similar facts, is excluded from any warranty.

10. EXPLODED VIEW - CP 19

No.	Ref.	Description
1	50160B	Tank
2	50145B	Clamp
3	50566B	Nozzle nut and joint
4	502605B	Nozzle Ø 5 (as an option, not included as standard)
4	502606B	Boquilla Ø 6
4	502608B	Nozzle Ø 8 (as an option, not included as standard)
5	50267B1	Joint, 1 unit
6	500061B	Seeger ring, 2 units
7	50150B	Trigger
8	50586B	Inox stud bolt
9	50152B	Packing nut
10	50609	Joints complete kit , (10a, 10b, 10c, 10d & 10e)
11	50154B	Bushing with regulator
12a	50607B	Needle
12b	50601B	Needle screw
13	50599B	Spring, 1 unit
15	50022B	Air regulator (as an option, not included as standard)
16	10CR1/4HB1	Female air inlet adaptor (as an option, not included as standard)
17	50399	Seeger ring for the trigger limiter, 2 units
18	50606B	Stud bolt
19	50602B	Trigger limiter
20	10CR1/4MB1	Male air inlet adaptor
	0308RX02	Complete kit



Exploded view Rev. 0



DECOPROYEC

C/Trilladores nº47 - Nave 4 y 5 (P.I. Los Molinos)

C.P.: 02520 - Chinchilla de Montearagón

(ALBACETE), Spain